



# Callouts: overall

**Total callouts for 2018 = 1458 – highest on record again**  
(including seabirds, turtles and other species).

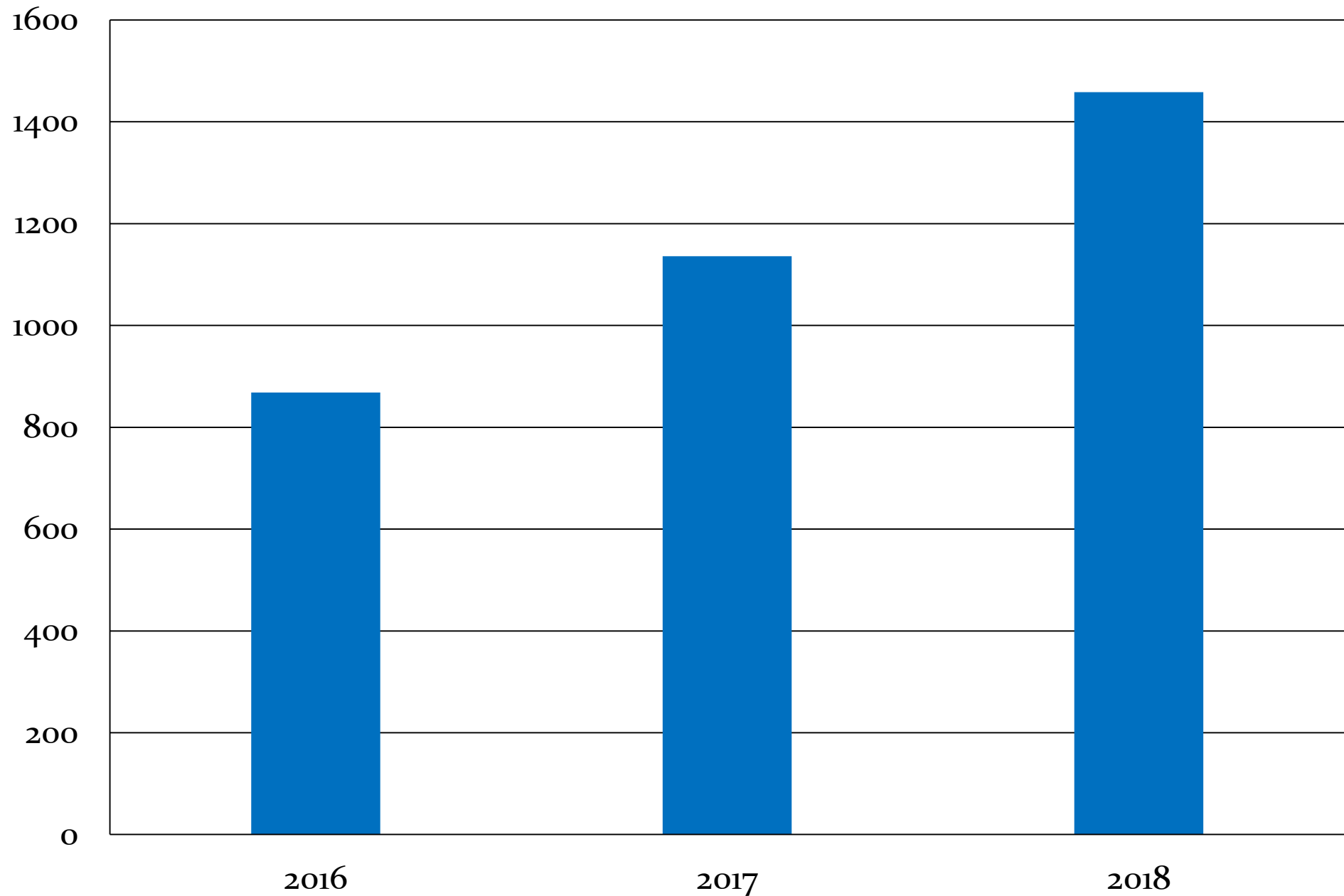
To compare, in 2017 we had 1136 callouts,  
and then in 2016 we had 874 callouts.

So 2017 was 30% busier than 2016,  
while 2018 was 28% busier than 2017!

If this trend continues then we could expect approximately  
1895 callouts in 2019!

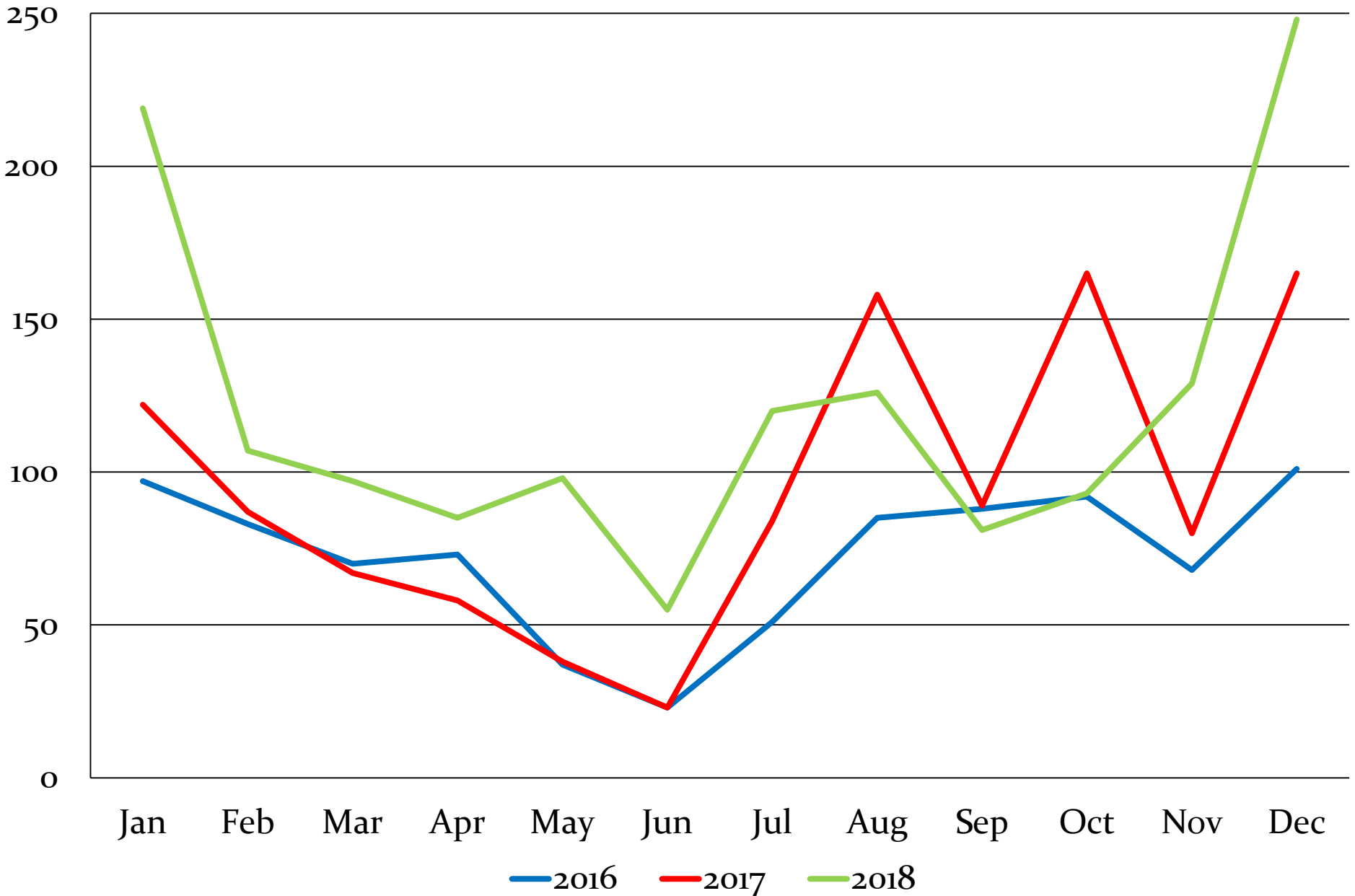


# Callouts: overall annual



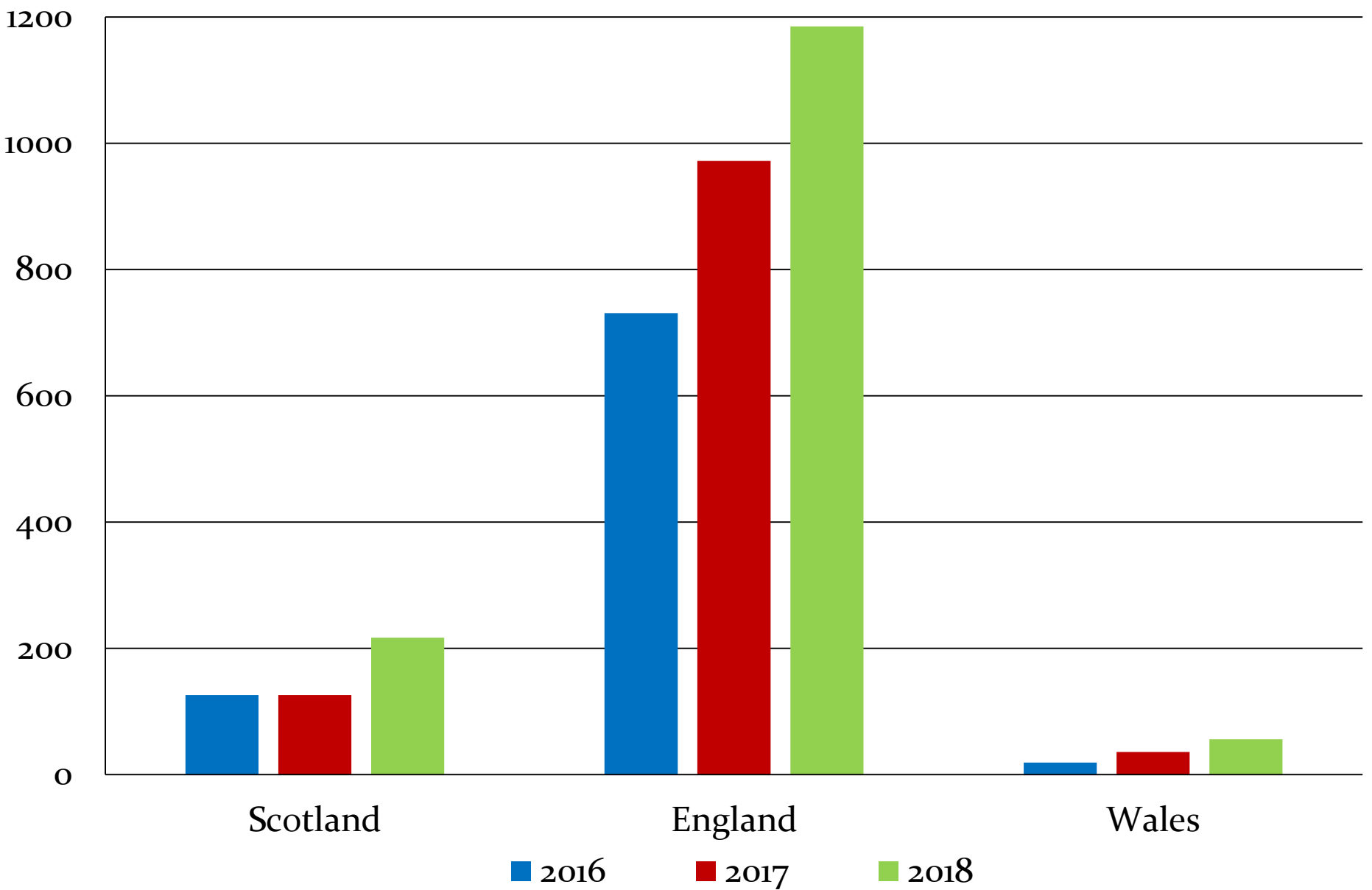


# Callouts: overall monthly



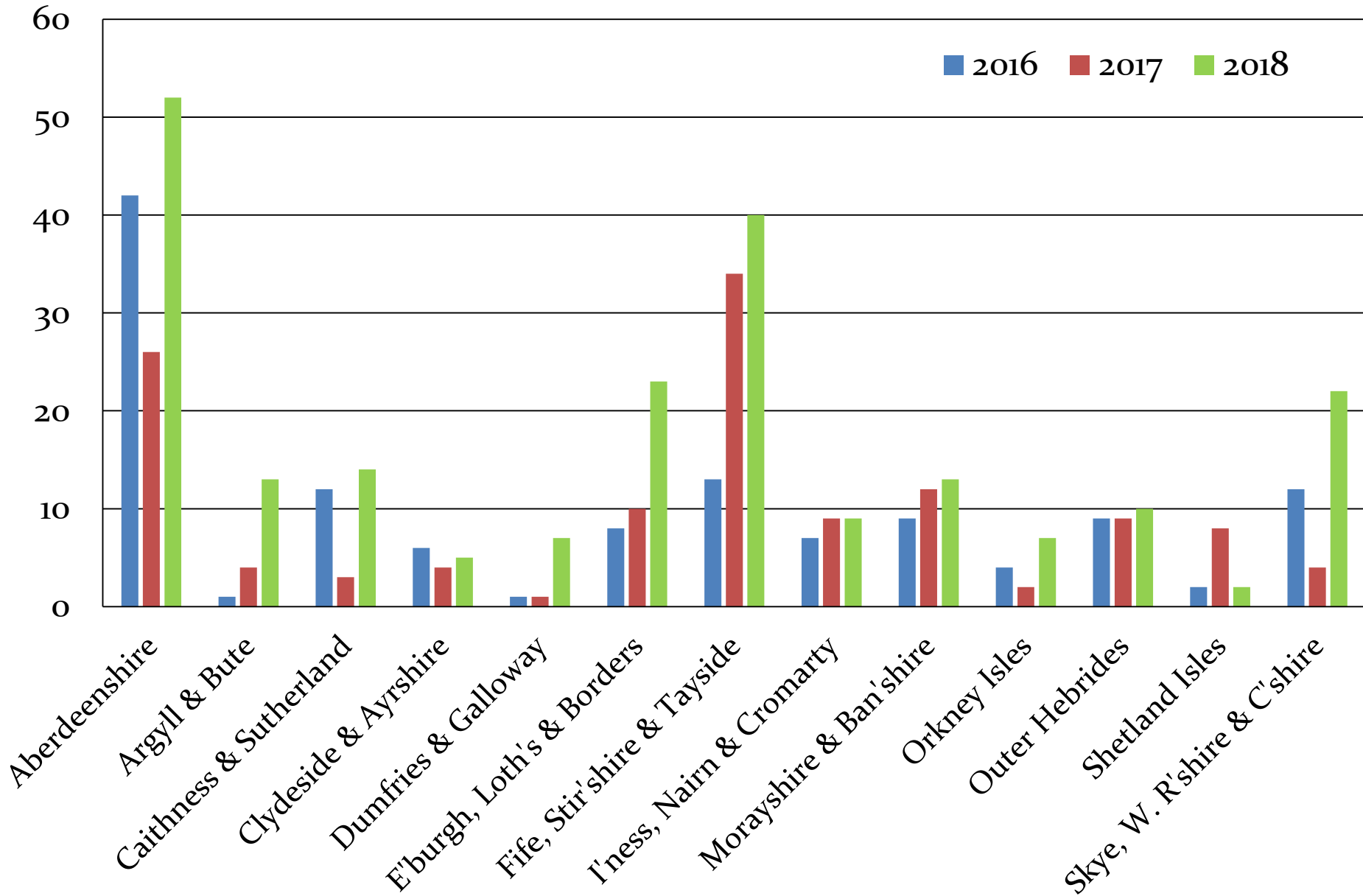


# Callouts: countries



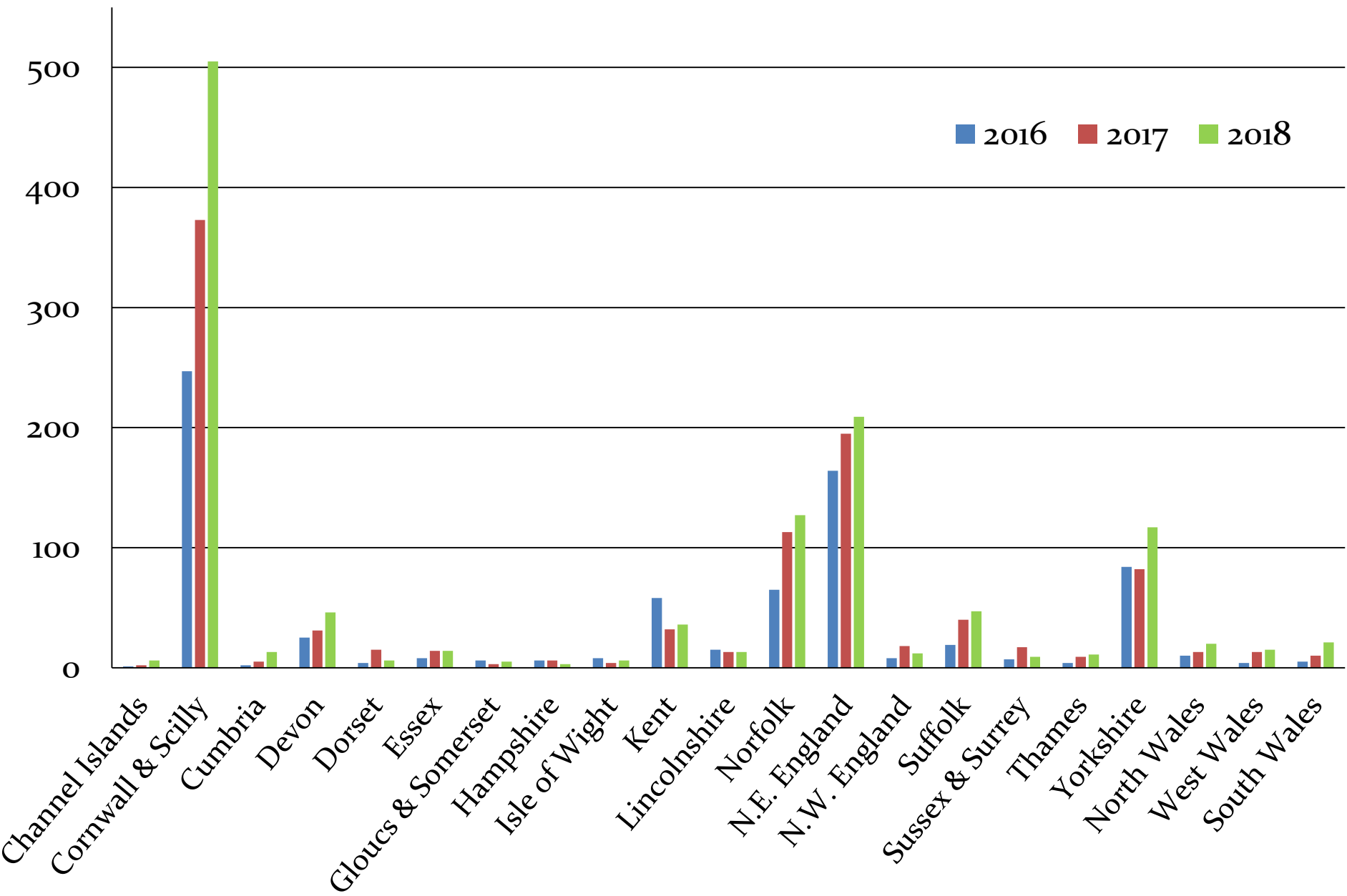


# Callouts: Scottish regions





# Callouts: English and Welsh regions





**Callouts:**  
**monthly species**

<b>January</b>	
Grey seal	211
Common seal	4
Harbour porpoise	1
Common dolphin	3
White beaked dolphin	1
<b>February</b>	
Grey seal	96
Common seal	4
Harbour porpoise	2
Common dolphin	5
<b>March</b>	
Grey seal	88
Common seal	7
Harbour porpoise	1
Common dolphin	1

<b>April</b>	
Grey seal	68
Common seal	6
Bearded seal	1
Harbour porpoise	6
Common dolphin	3
Orca	1

<b>May</b>	
Grey seal	80
Common seal	4
Walrus	2
Harbour porpoise	8
Risso's dolphin	1
Pilot whale	1
Minke whale	2
<b>June</b>	
Grey seal	26
Common seal	17
Harbour porpoise	6
Common dolphin	1
Minke whale	1
Fin whale	4

<b>July</b>	
Grey seal	46
Common seal	47
Harbour porpoise	7
Common dolphin	6
Striped dolphin	1
Sowerby's beaked whale	1
Minke whale	1

<b>August</b>	
Grey seal	26
Common seal	84
Harbour porpoise	1
Common dolphin	4
Striped dolphin	1
White beaked dolphin	1

<b>September</b>	
Grey seal	29
Common seal	41
Harbour porpoise	1
Common dolphin	1
White beaked dolphin	1
Beluga	1
N. Bottlenose whale	1
Minke whale	1

<b>October</b>	
Grey seal	61
Common seal	25
Harbour porpoise	1
Common dolphin	1
Pilot whale	1
Sowerby's beaked whale	1
Minke whale	1

<b>November</b>	
Grey seal	109
Common seal	11
Common dolphin	1
Risso's dolphin	1
Bottlenose dolphin	1
Pilot whale	1

<b>December</b>	
Grey seal	225
Common seal	10
Common dolphin	5
Striped dolphin	2
Pilot whale	2
Cuvier's beaked whale	1



# Callouts: overall animals

## **Pinnipeds total: 1327**

Grey seals: 1064

Common seals: 261

Bearded seals: 1

Walrus: 1

## **Cetacean total: 117**

Harbour porpoises: 34

Common dolphins: 50 (two mass strandings – one of approx. 20 animals and one pair).

Striped dolphin: 4

White beaked dolphin: 3

Risso's dolphin: 2

Bottlenose dolphin: 1

Pilot whale: 9 (one mass stranding of 5 and one near stranding of a pair).

Orca: 1

Beluga: 1

Sowerby's beaked whale: 2

Cuvier's beaked whale: 1

Northern bottlenose whale: 1

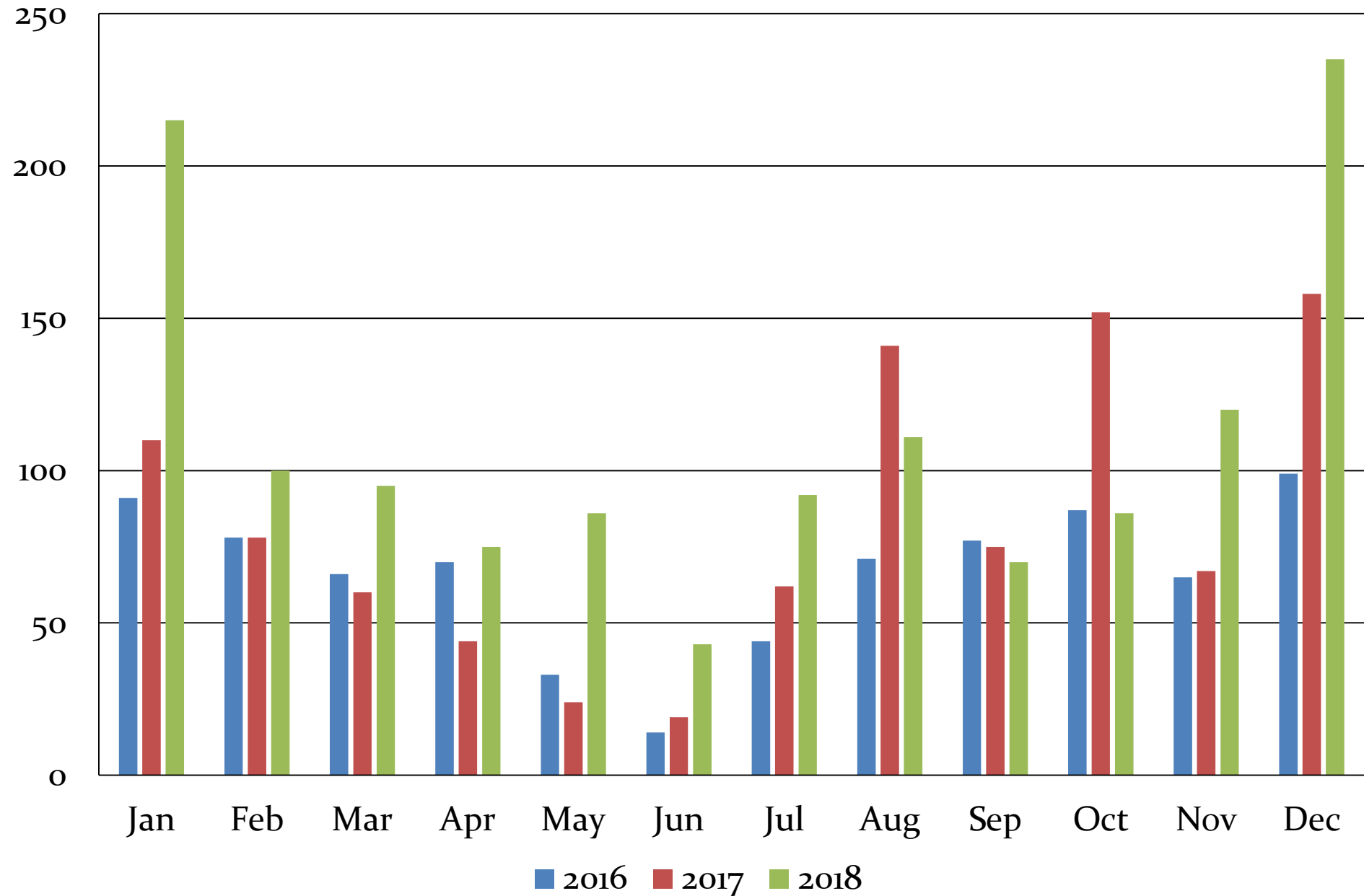
Minke whale: 6

Fin whale: 2



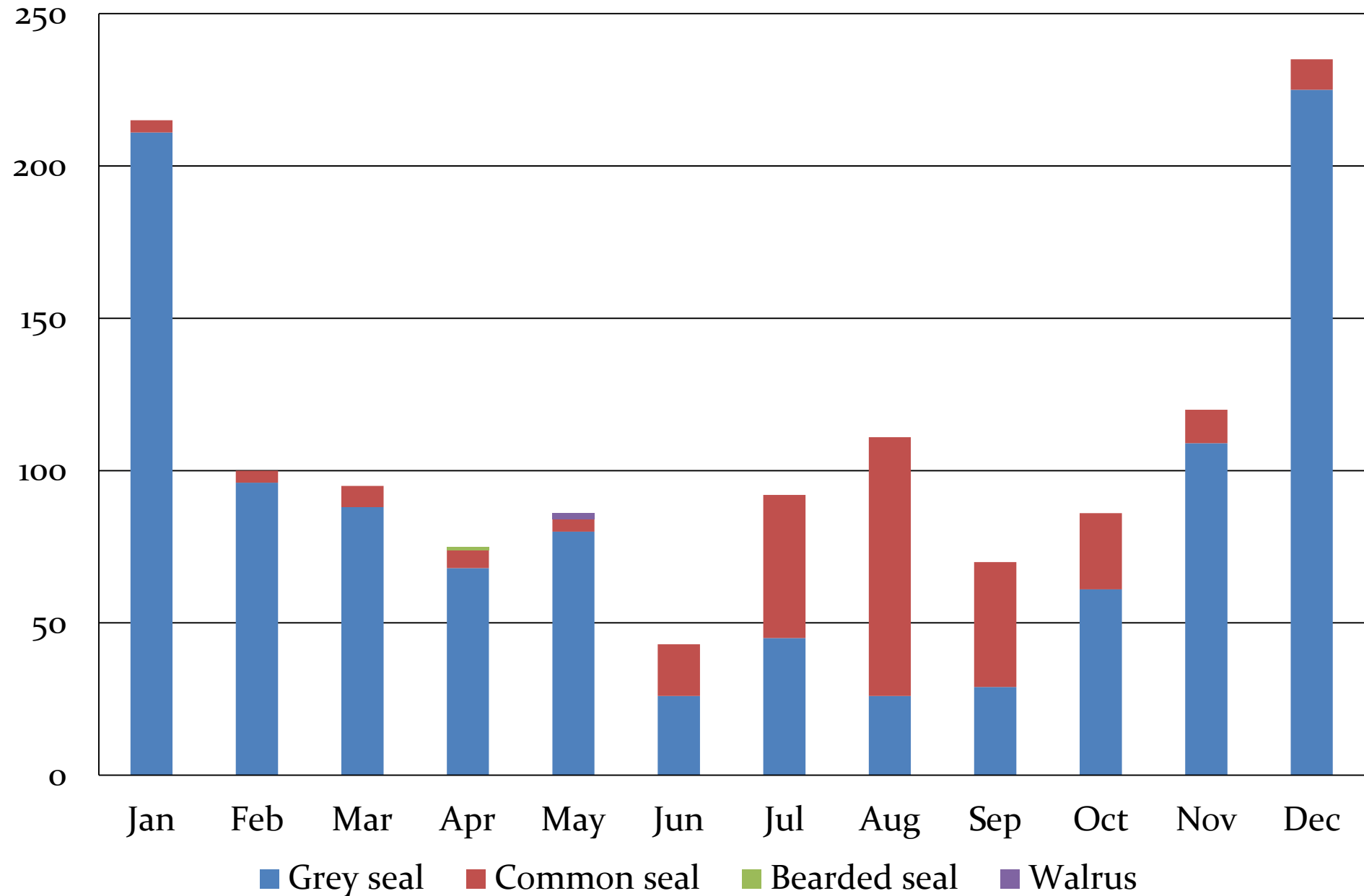


# Callouts: pinnipeds by month



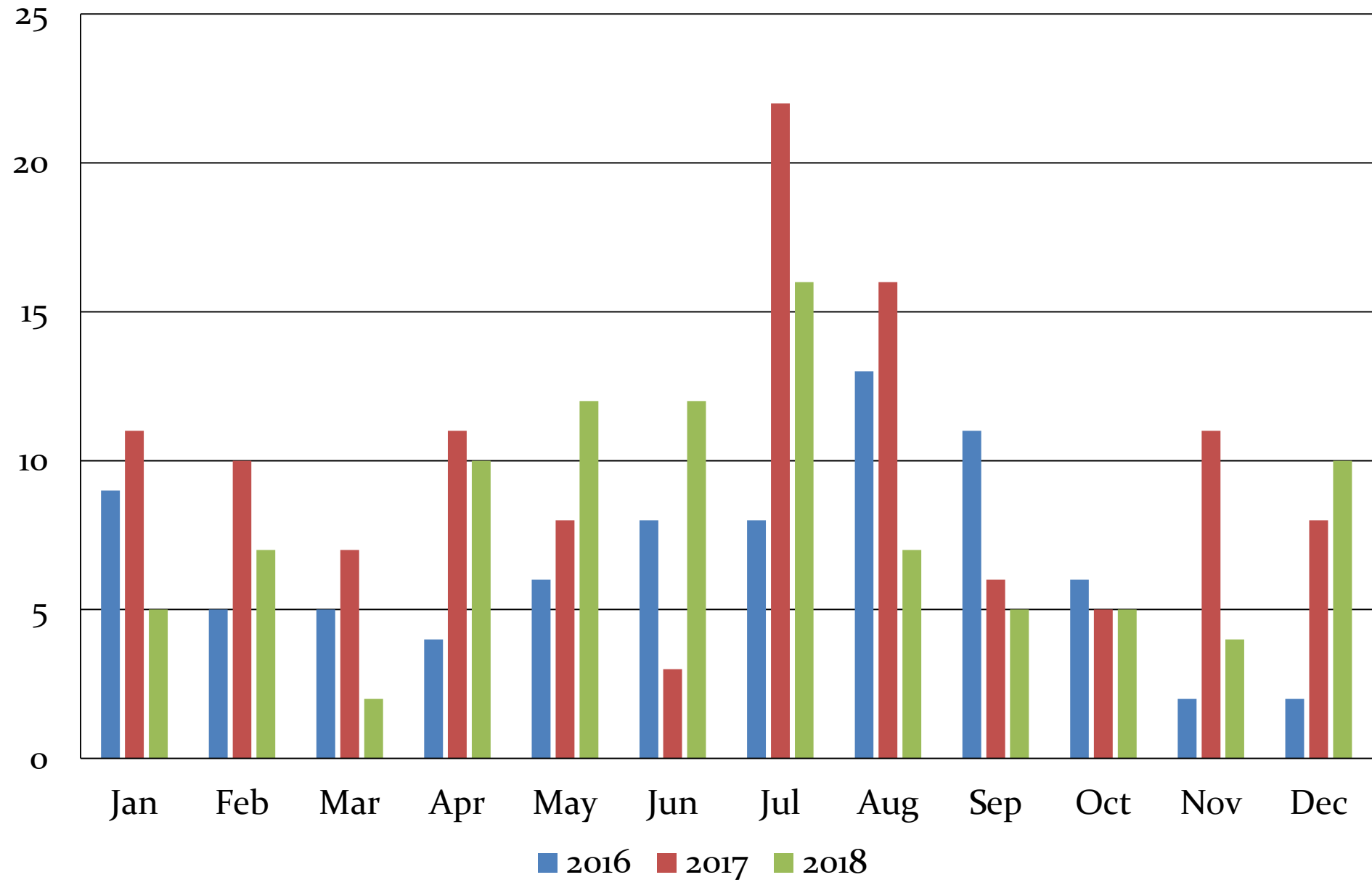


# Callouts: pinnipeds by species



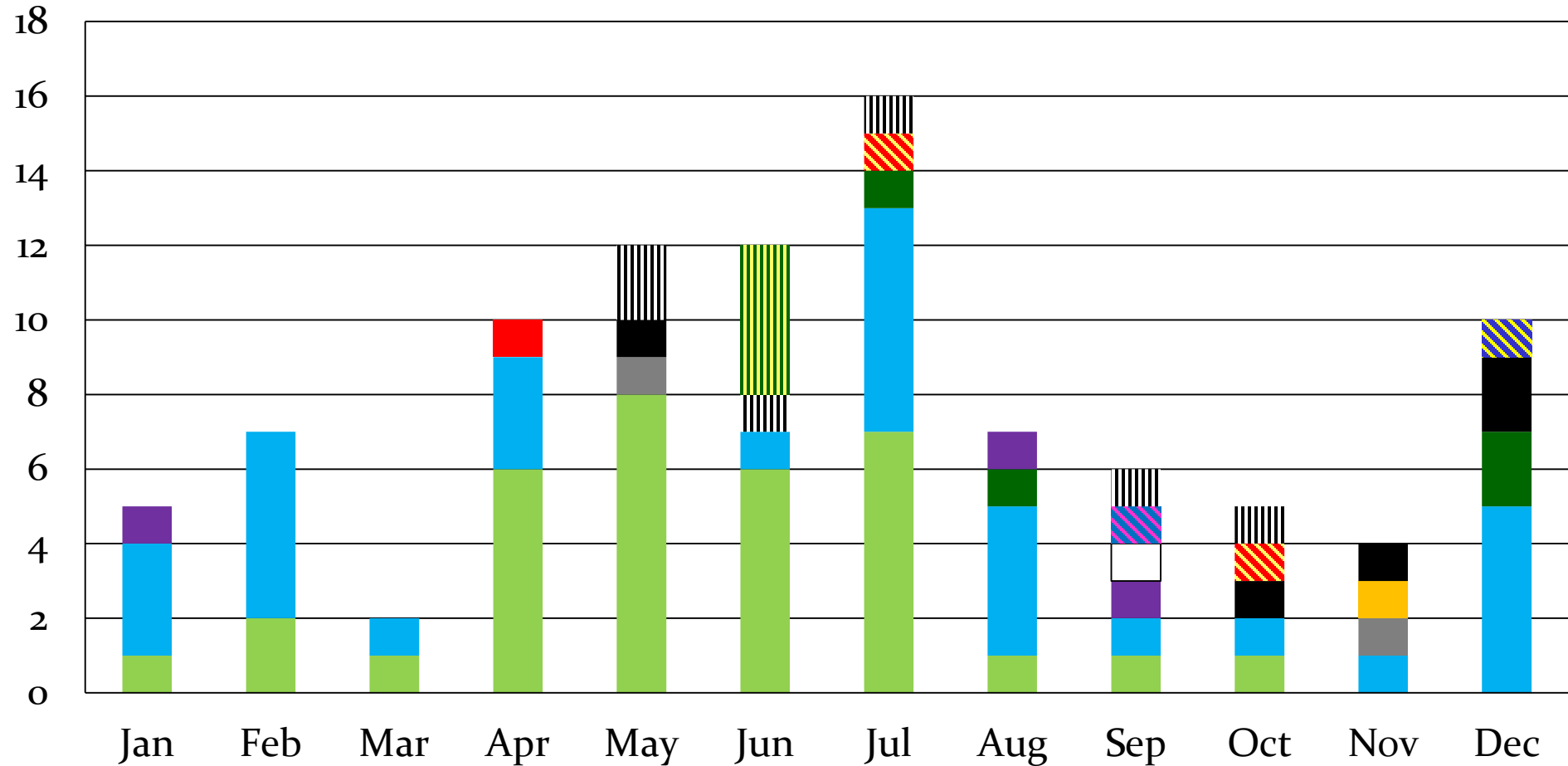


# Callouts: cetaceans by month





# Callouts: cetaceans by species



- Harbour porpoise
- White beaked dolphin
- Pilot whale
- Sowerby's beaked whale
- Minke whale
- Common dolphin
- Risso's dolphin
- Orca
- Cuvier's beaked whale
- Fin whale
- Striped dolphin
- Bottlenose dolphin
- Beluga
- N. bottlenose whale